

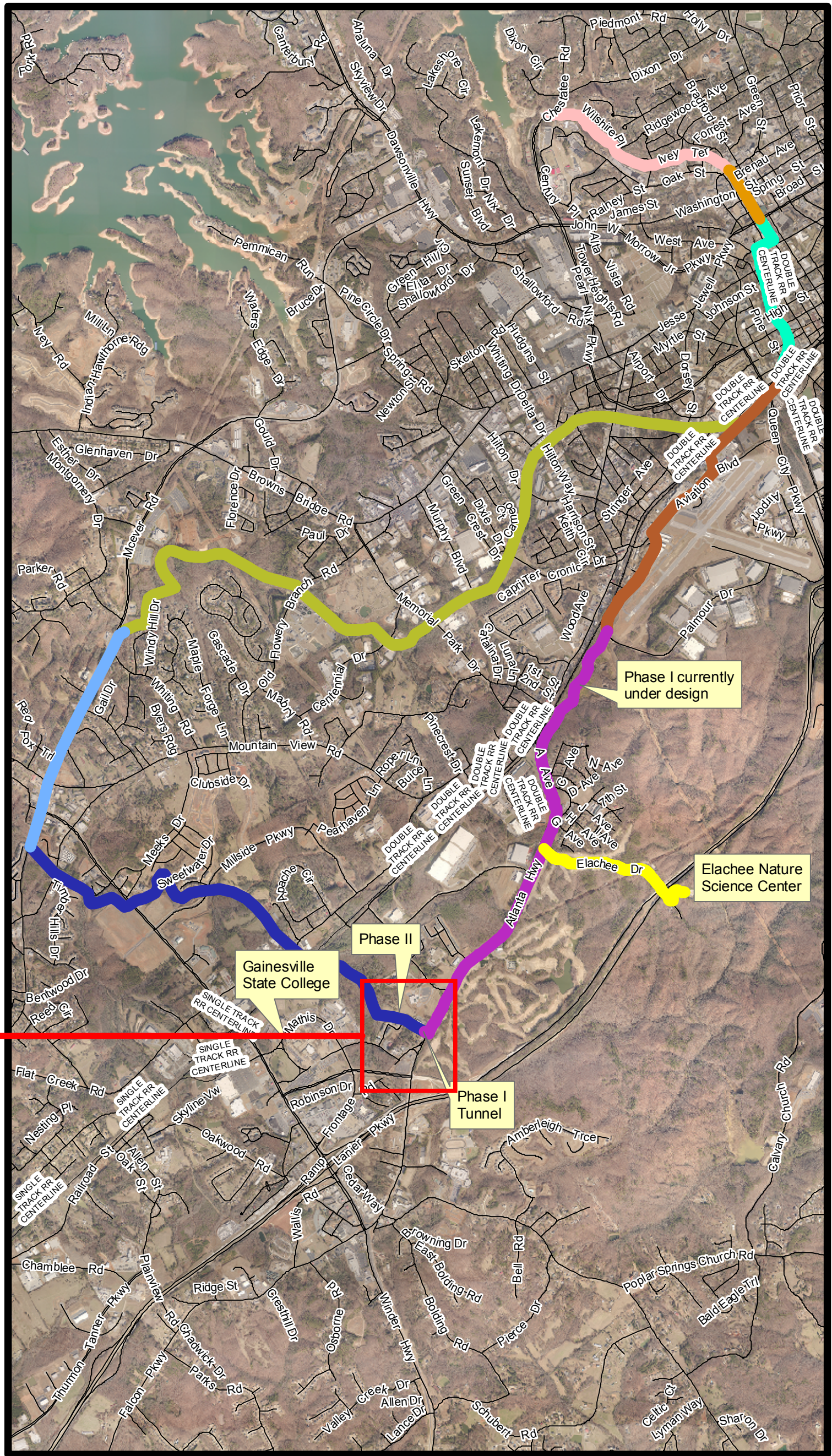
# Proposed Central Hall Recreation & Multi-Use Trail

Hall County Public Works and Utilities Department  
Engineering Division

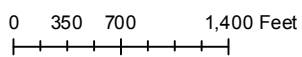
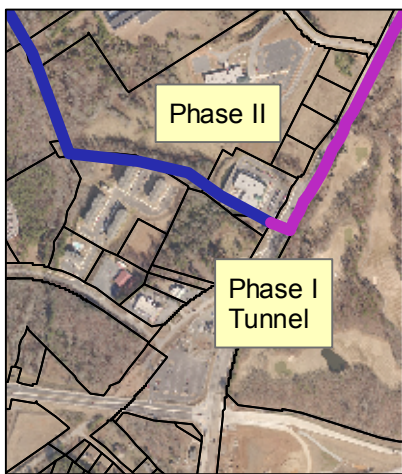
## Proposed Route Segments/Lengths

### Segment Name

- Atlanta Hwy Greenway 2.47 mi.
- Balus Creek Route 2.70 mi.
- Downtown Greenway Connector .30 mi.
- Elachee Connector .91 mi.
- Flat Creek Route 4.47 mi.
- McEver Rd Greenway Connector 1.23 mi.
- Mid-Town Greenway .95 mi.
- Palmour Dr Connector 1.68 mi.
- Rock Creek Greenway 1.09 mi.



## Phase II



**DISCLAIMER**  
HALL COUNTY GOVERNMENT AND THE CITY OF GAINESVILLE MAKE NO WARRANTIES, EXPRESSED OR IMPLIED, INCLUDING IMPLIED WARRANTIES OF MERCHANTABILITY AND FITNESS FOR PURPOSE, CONCERNING THE ACCURACY, COMPLETENESS, RELIABILITY, OR SUITABILITY OF THIS DATA. FURTHERMORE, HALL COUNTY GOVERNMENT AND THE CITY OF GAINESVILLE ASSUME NO LIABILITY WHATSOEVER ASSOCIATED WITH THE USE OR MISUSE OF SUCH DATA. ANY INTERPRETATION OR CONCLUSIONS FROM THE DATA ARE THE RESPONSIBILITY OF THE USER.

