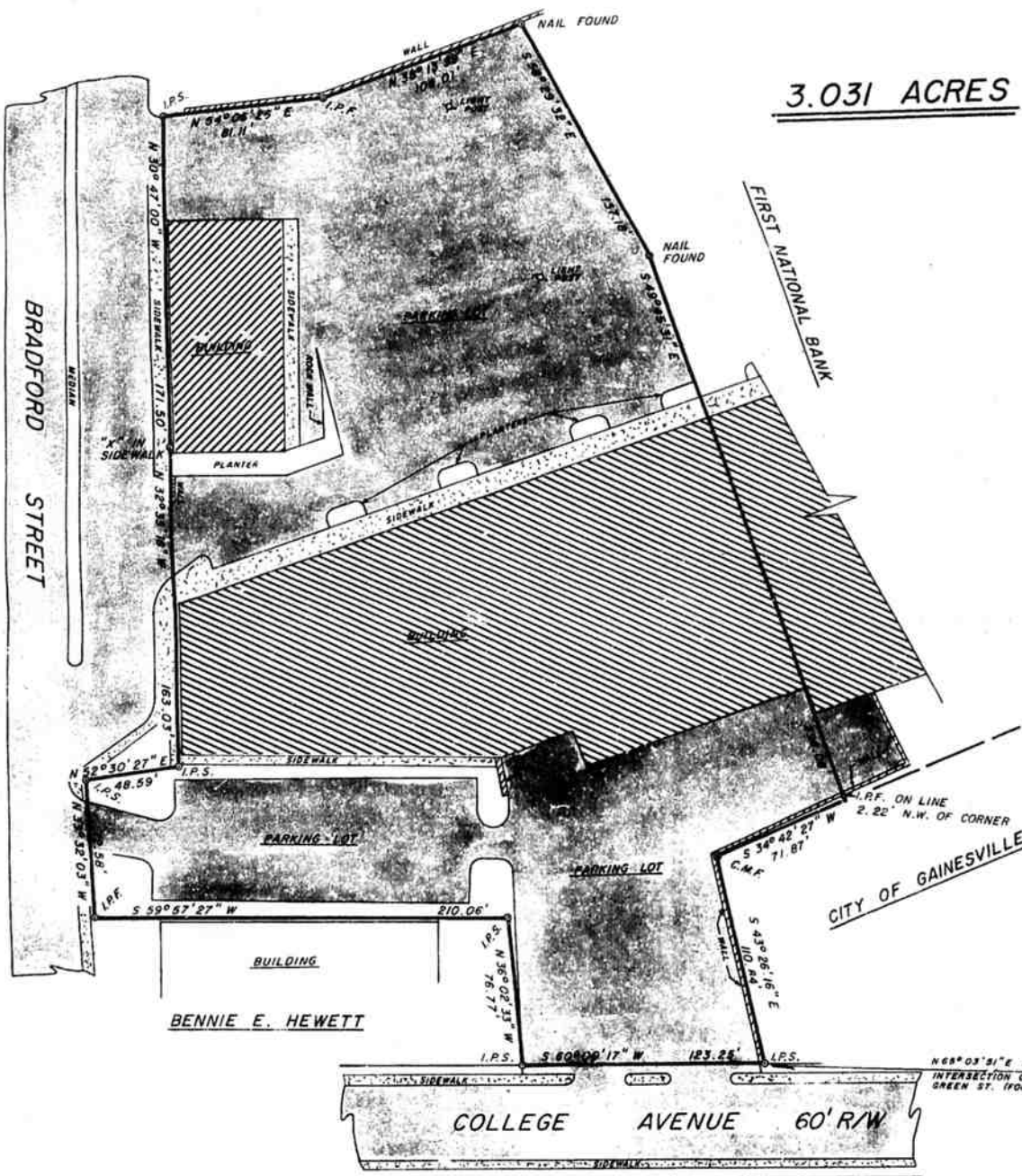


MAG. NORTH

CITY OF GAINESVILLE

3.031 ACRES



BRADFORD STREET

FIRST NATIONAL BANK

CITY OF GAINESVILLE

BENNIE E. HEWETT

COLLEGE AVENUE 60' R/W

NE 63°03'51" E 351.16' TO E INTERSECTION OF COLLEGE AVE. AND GREEN ST. (FORMERLY HUDSON ST.)